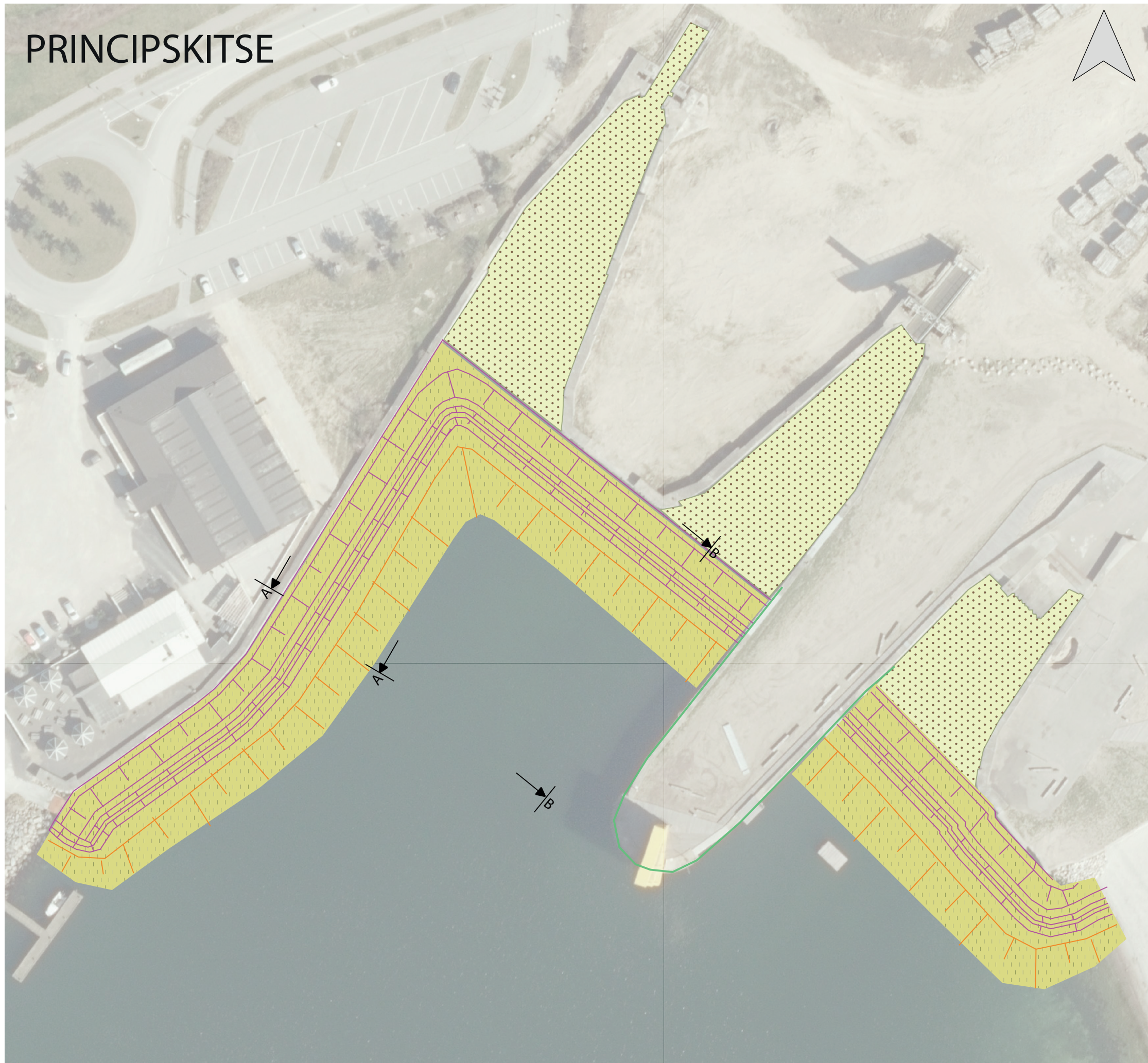




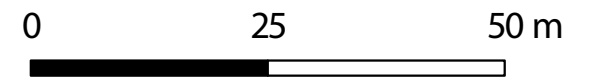


PRINCIPSKITSE



Signatur

-  Opfyldning
-  Sand
-  Forstøbning og anodeopsætning
-  Stensætning



Plantegning		
Løsning med stensætning foran opfyldning		
CKE 19.05 - Halsskov Færgehavn		
Ekstraordinær vedligeholdelse af kaj anlæg		
Date: 29-01-2019	Prepared: SSC	Checked:
Rev.: 1	Scale: 1:800	Format: